

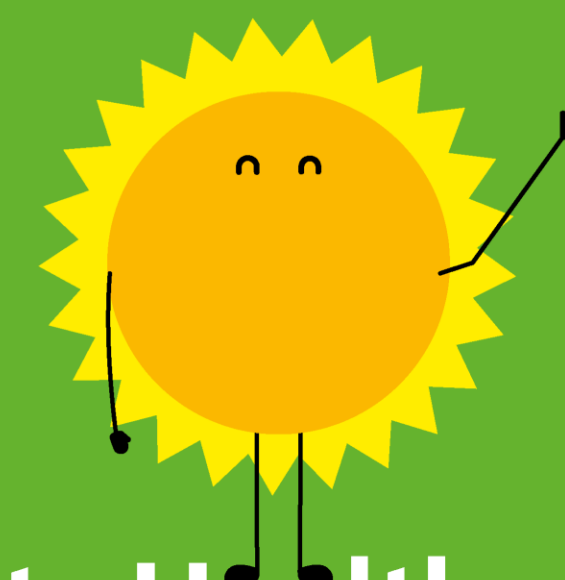
Asthma School Awareness in schools



Barts Health
NHS Trust



Atopy Nurses
Farhana
Nasiha
Tori



Young Barts Health



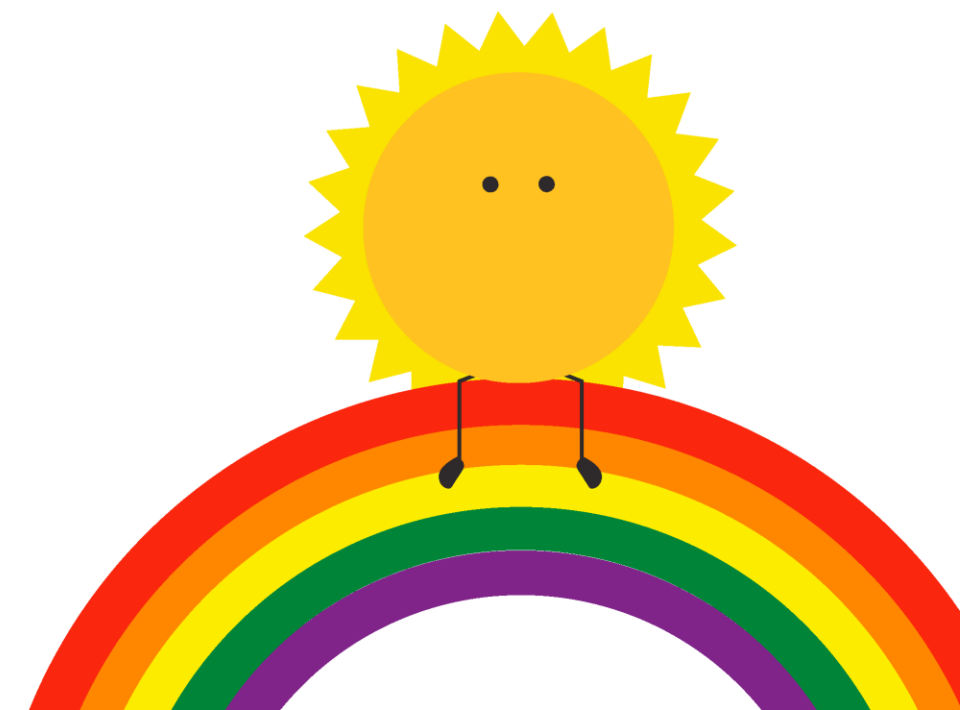
Introduction



Barts Health
NHS Trust

- Asthma is the most prevalent long-term condition, affecting 1 in 11 children. The EU experiences the highest rates of childhood asthma, emergency admissions, and related deaths.
- It is recommended that schools become "Asthma Friendly" to better support affected children.
- Schools also have a legal obligation to manage asthma and allergies.

**Young
Barts
Health**



Engagement session



Barts Health
NHS Trust

Checking my
child's asthma
in school

Increase
awareness
in schools

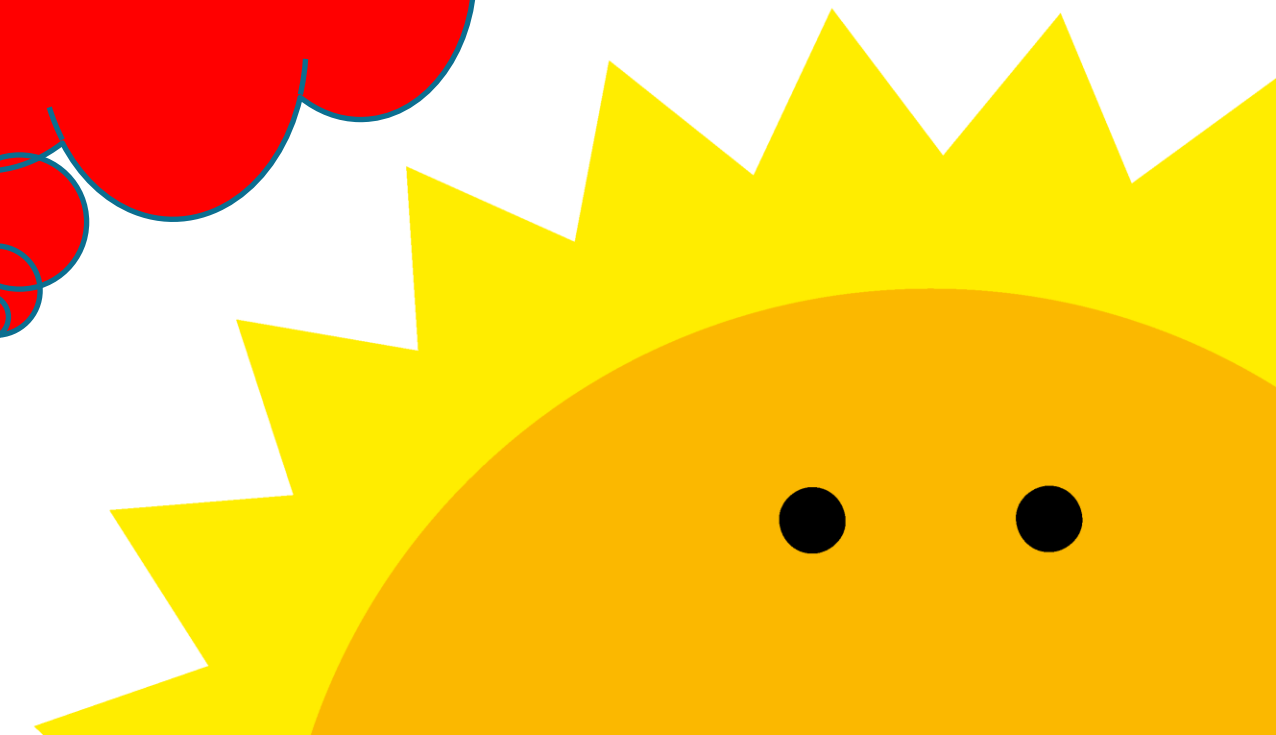
Prefer not
in school
hours

More
intervention
in school

More frequent
appointments

More
community-
based clinics

Young Barts Health



Asthma & Allergy Friendly schools



Barts Health
NHS Trust

1. Asthma and Allergy policy
2. Asthma and Allergy register
3. Asthma/Allergy Champion
4. Whole staff awareness session
5. Ensuring pupils have care plans
6. Asthma/Allergy Emergency Medicine Kit

Our [Asthma and allergy Tool kit](#)



Whole school awareness session

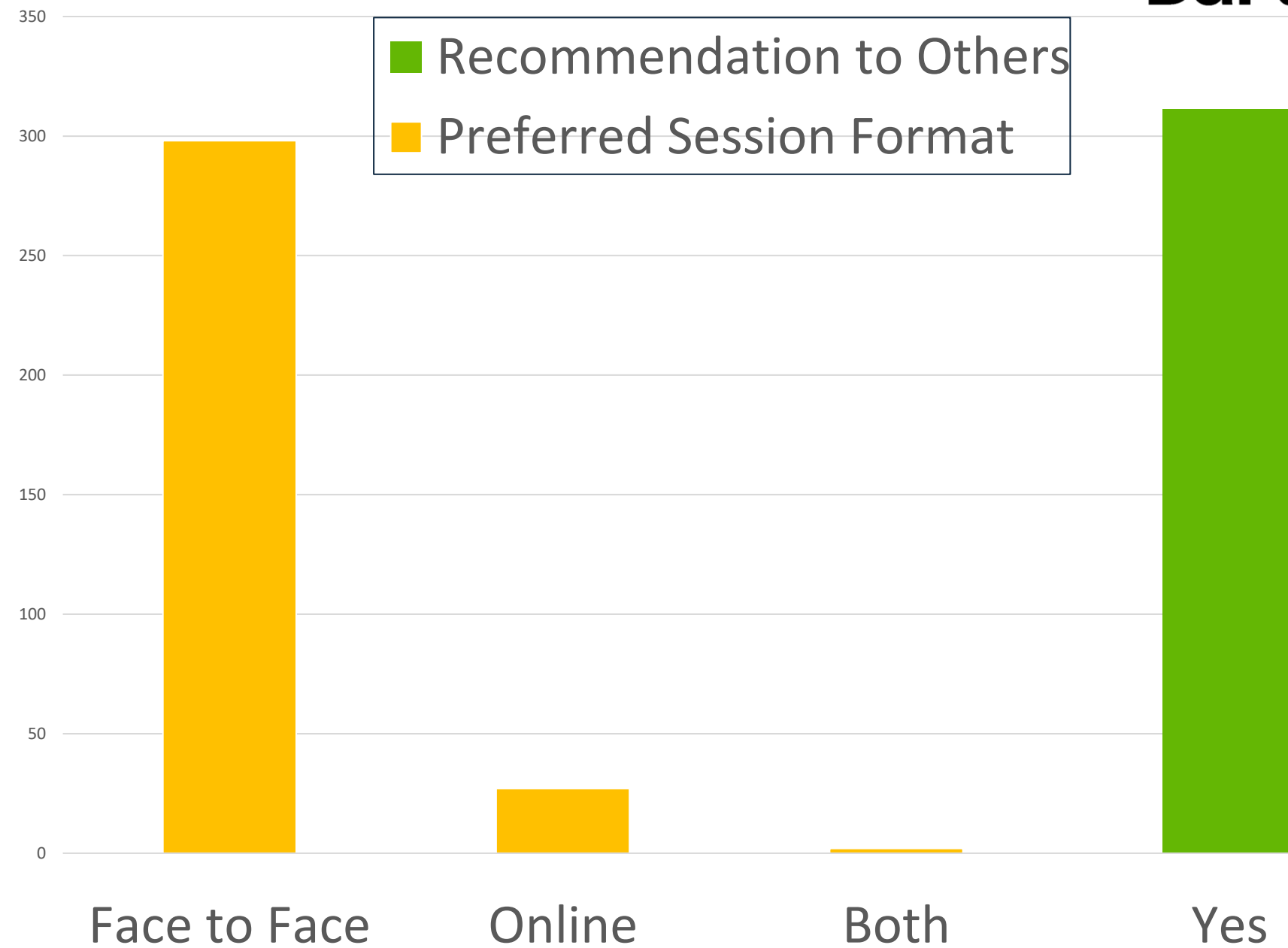


Barts Health
NHS Trust

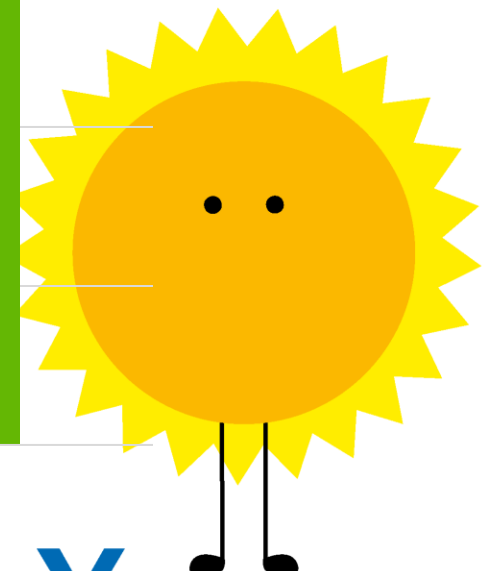
- **Session Promotion:** The awareness sessions were promoted through various channels, including the Headteacher and SENCO Bulletin, outreach by asthma champions, and direct contact with interested schools.
- **Session Format:** The sessions were conducted as **1-hour face-to-face** meetings, allowing for interactive learning.
- **Asthma and Allergy Status:**



Out come



Barts Health
NHS Trust

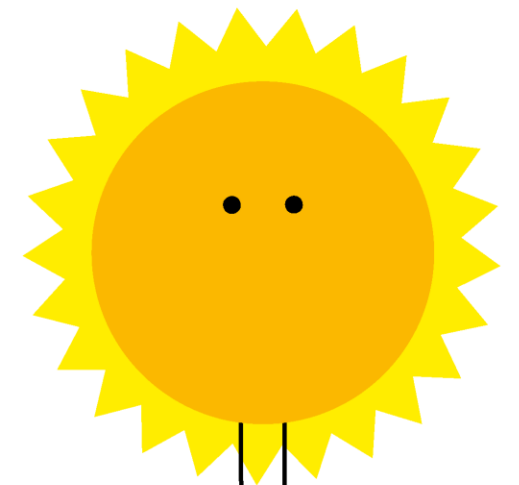


**Young
Barts
Health**

Group Consultations

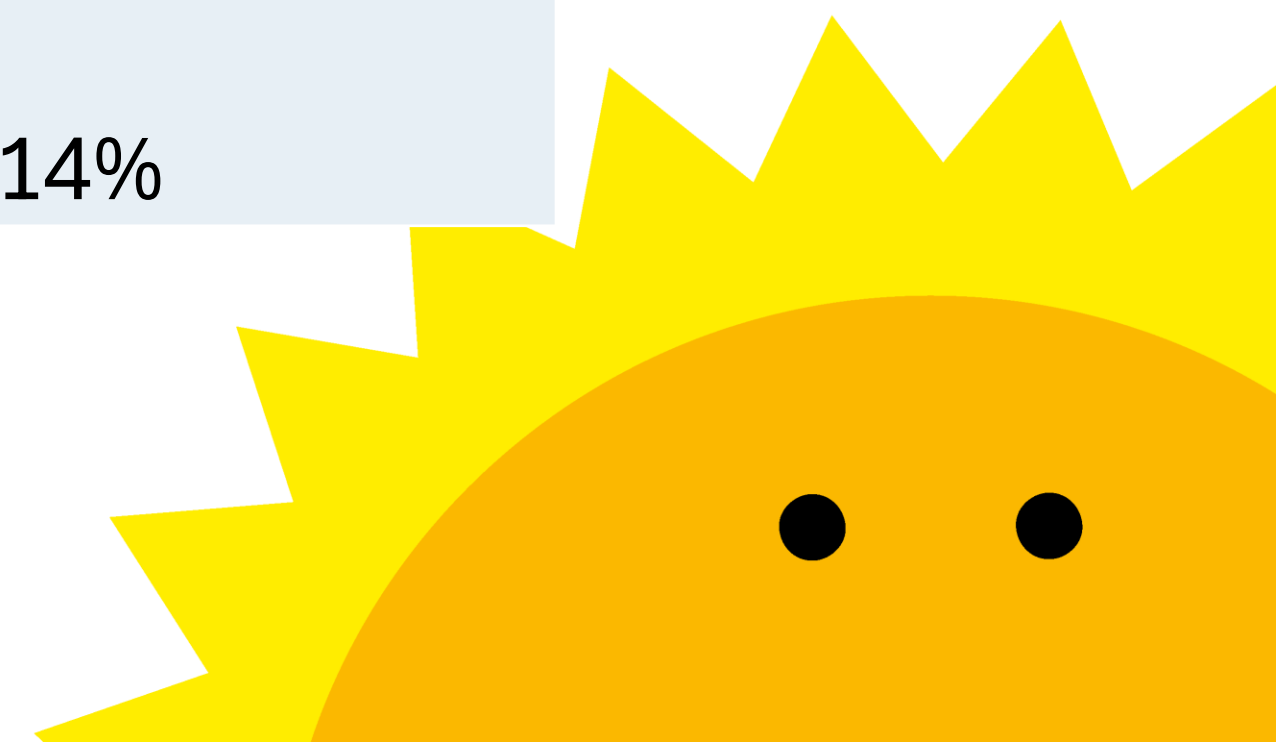


Barts Health
NHS Trust



**Young
Barts
Health**

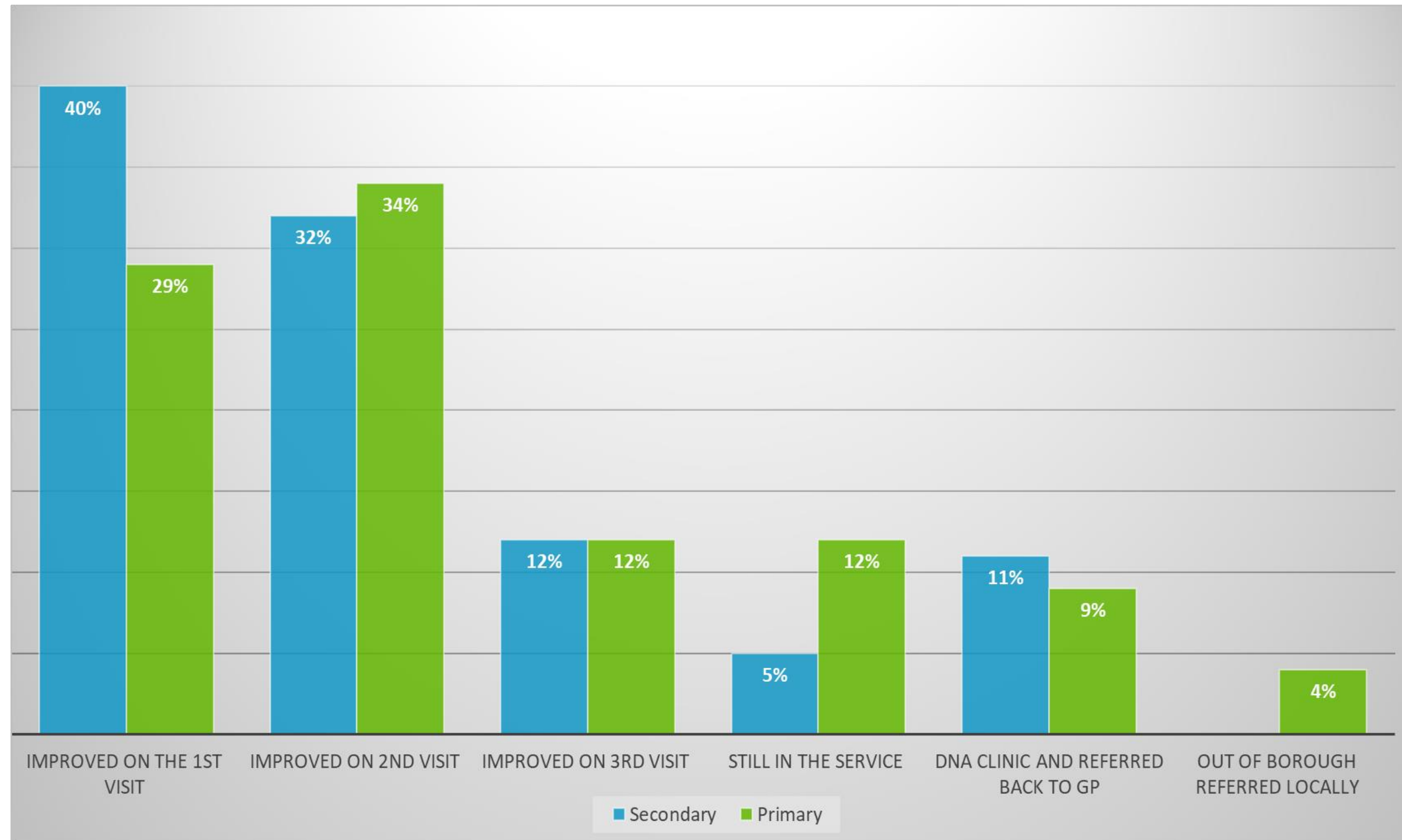
Outcome	Secondary	Primary
Poor ACT	41%	36%
Incorrect spacer	47%	45%
Coded as having asthma	61%	22%
Annual asthma review	43%	48%
Annual Asthma plan recorded (GP)	43%	54%
Visit to hospital in the last year	4%	14%



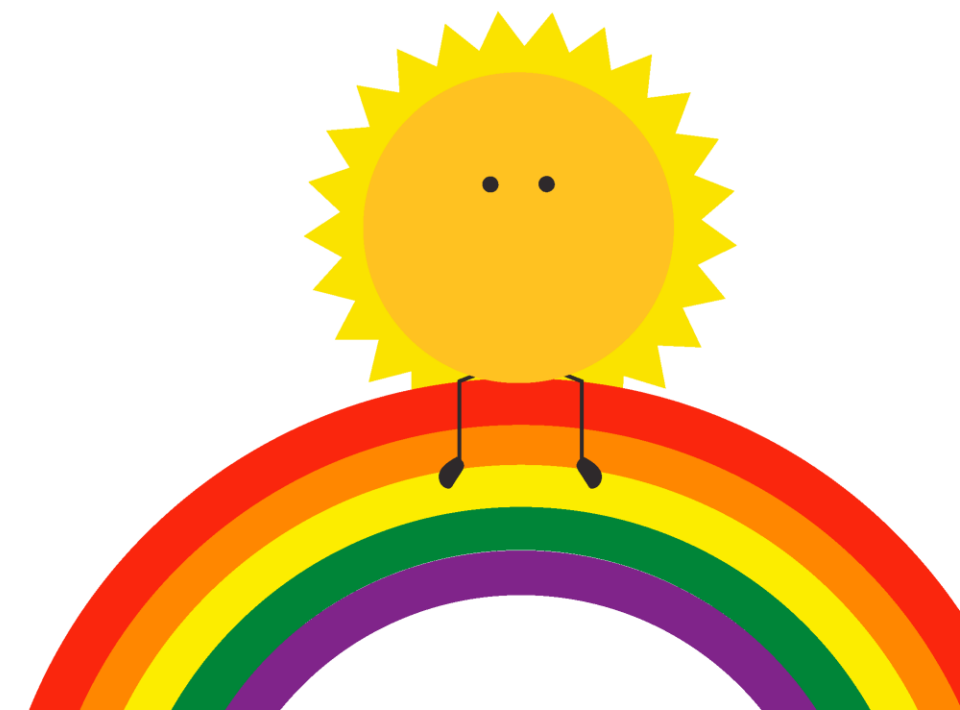
Specialist Asthma Clinic



Barts Health
NHS Trust



**Young
Barts
Health**



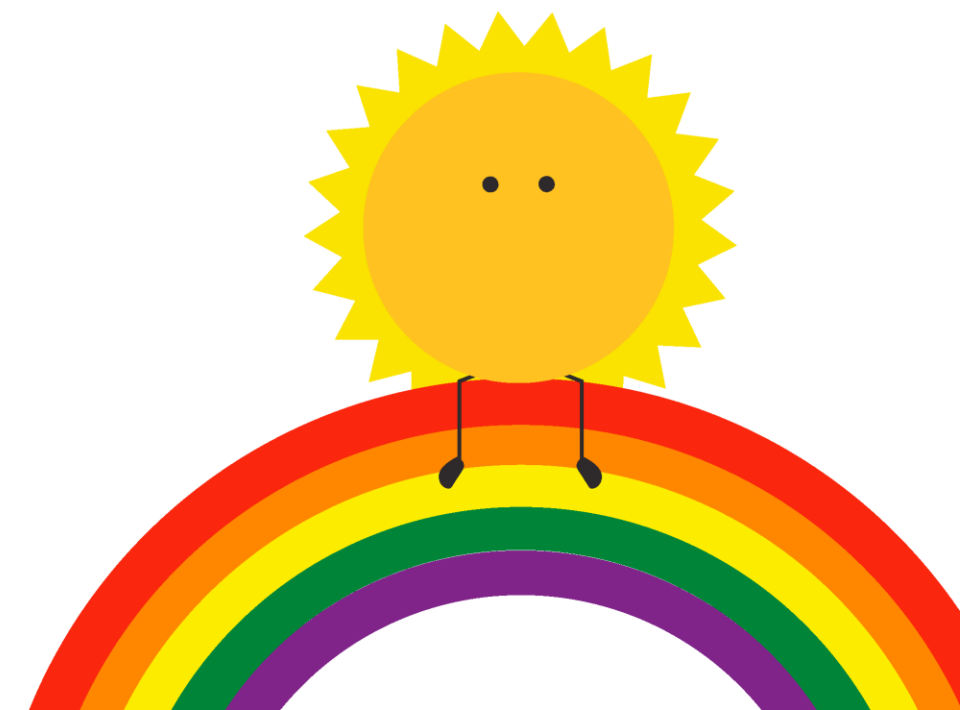
Barriers



Barts Health
NHS Trust

- Difficulty involving schools and scheduling due to varying availability.
- Some schools were more proactive than others in supporting the initiative.
- Limited parental involvement and engagement.
- Issues with obtaining accurate information about children.
- Challenges managing large group sessions.
- Time-consuming auditing process.

**Young
Barts
Health**

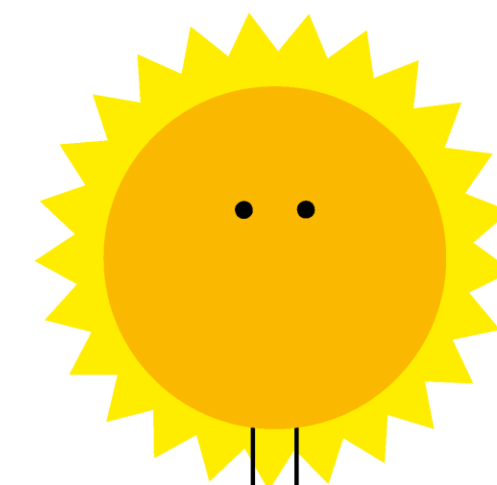


Conclusion

- **Increased awareness and understanding** of asthma and allergy management among staff, parents, and students.
- **Effective identification** of children with poor asthma control, allowing for timely intervention.



Barts Health
NHS Trust



**Young
Barts
Health**

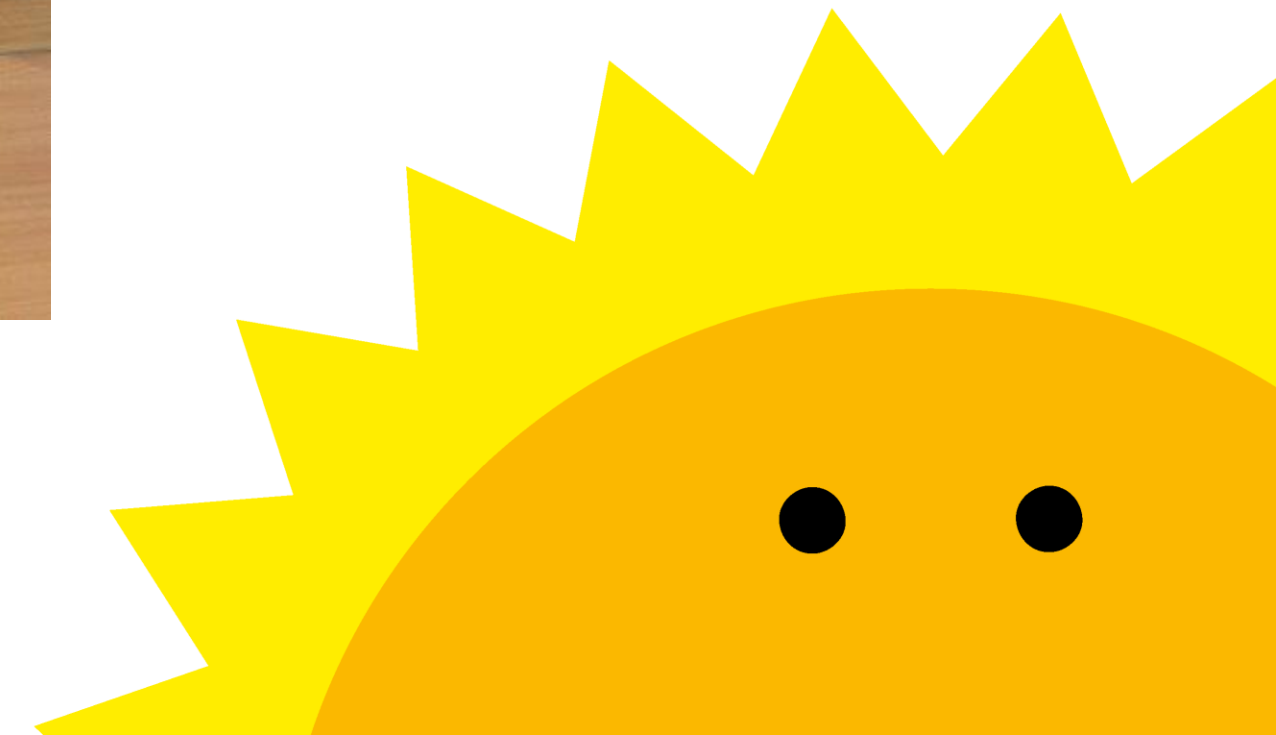
The Future

- Working on all schools to be Asthma and allergy friendly
- Whole school awareness sessions
- Funding to continue to deliver support in school



Barts Health
NHS Trust

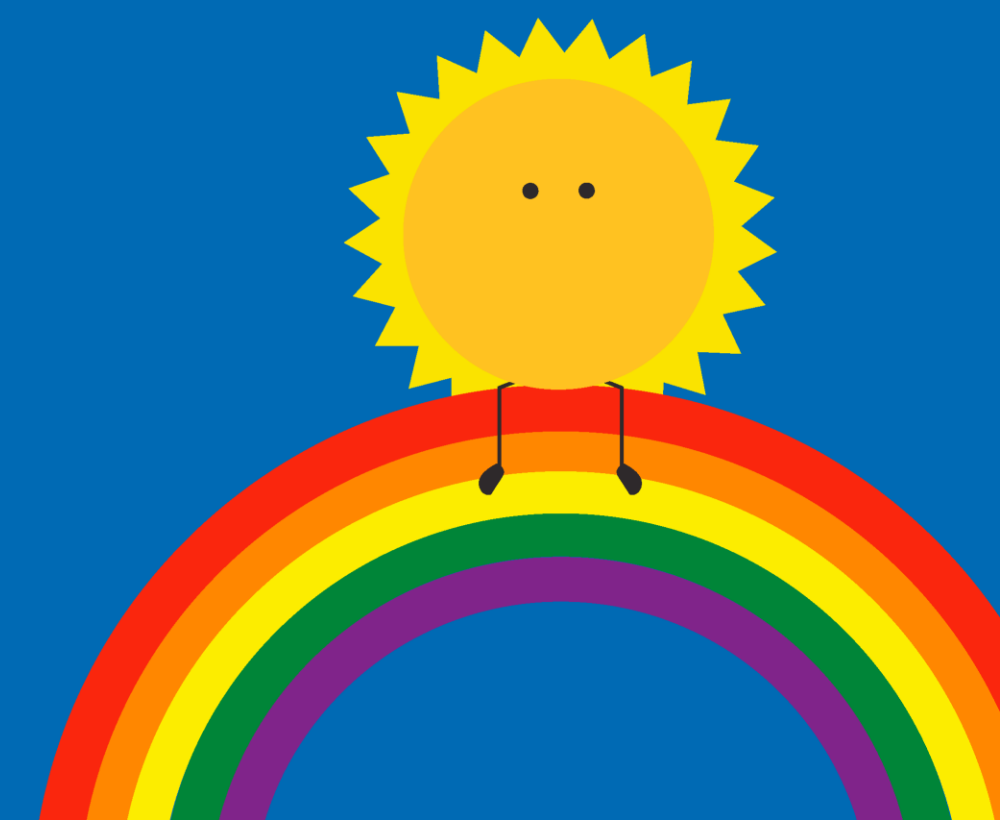
Young Barts Health



Thank you for listening Questions

NHS

Barts Health
NHS Trust



You